

For Sales Enquiry
sales@sraheja.com
+91 97730 41000 | 98201 32281

Z16

— BY —



RERA Registration No. P51800023799

Disclaimer: Images shown are tentative and for representation purposes only. All specifications, designs, layouts facilities, amenities, dimensions, plans etc, are subject to change with notice. The layout development is in phase subject to change and amendments from time to time. Development plans are subject to approval of the authorities. This advertisement constitute or form part of an offer and or contract.



Crafted With Intention. Made for Real Living.



Z16's architecture feels right at home in the heart of Bandra. Tucked among quaint lanes, S Raheja's latest venture is built with the modern family in mind. From after school homework to family movie nights, Z16's contemporary design makes the most of every last square foot.



Z16's expertly crafted interiors are designed with livability in mind

Textured Finishes, Glossy Accents, and a modern colour scheme add a distinctive character to each stylish residence.

GENERAL AMENITIES

- Roof- top Zen Garden
- A well-equipped Gymnasium
- High speed Branded Elevators
- Grand Entrance lobby with a waiting area for guests and visitors
- 24 Hrs CCTV surveillance
- Provision for Internet connection and Intercom
- Piped gas connection installed by Mahanagar Gas connection





INTERNAL AMENITIES

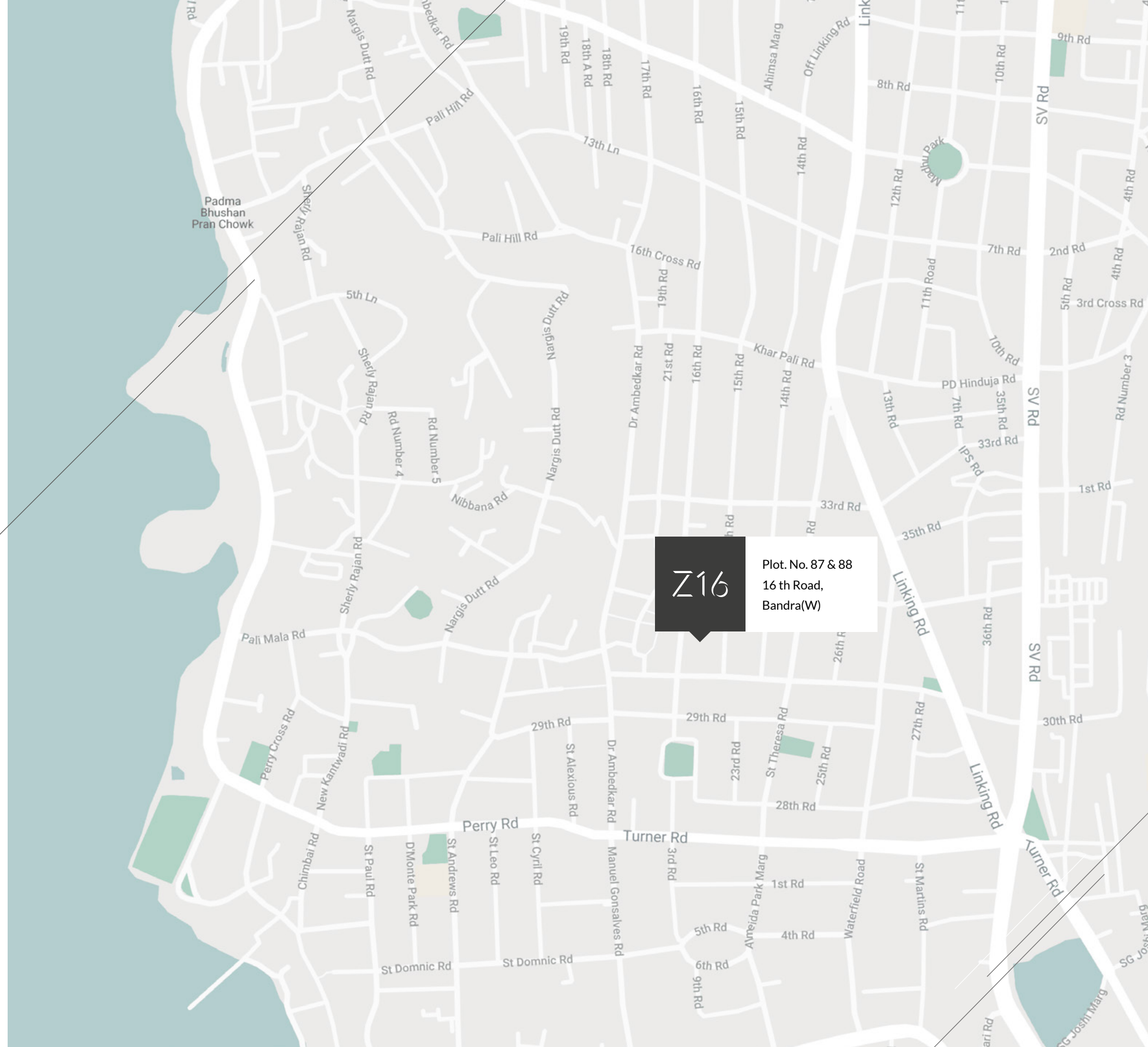
- Italian Marble/ Wooden Flooring
- Heavy section Anodizing/ Powder Coating Aluminium sliding full height windows (Beam to Skirts)
- Granite Kitchen platform with stainless steel sink and Modular Kitchen
- Branded Fittings and Fixtures in your entire apartment
- Internal Walls and Ceilings in POP Finish.
- Anti-Skid flooring in Wet Areas
- Legrand switches and LED lights

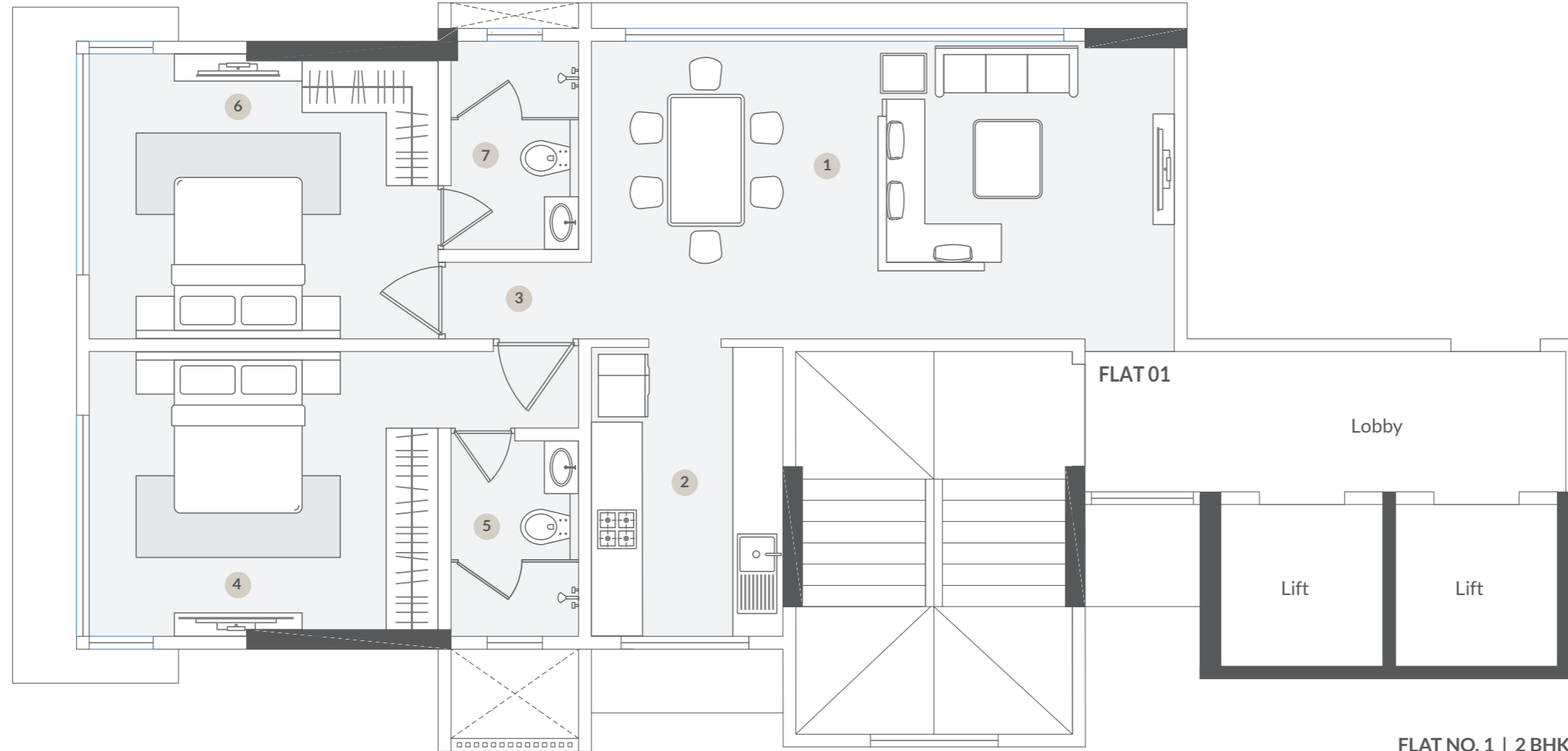
Uptown is an understatement.

■
▲
Bandra, without a question is one of the most desirable neighbourhoods in Mumbai. Its a gilded enclave of the cities most elite residences, and at Z16, its minutes from your doorstep.

Nearby

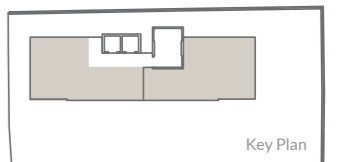
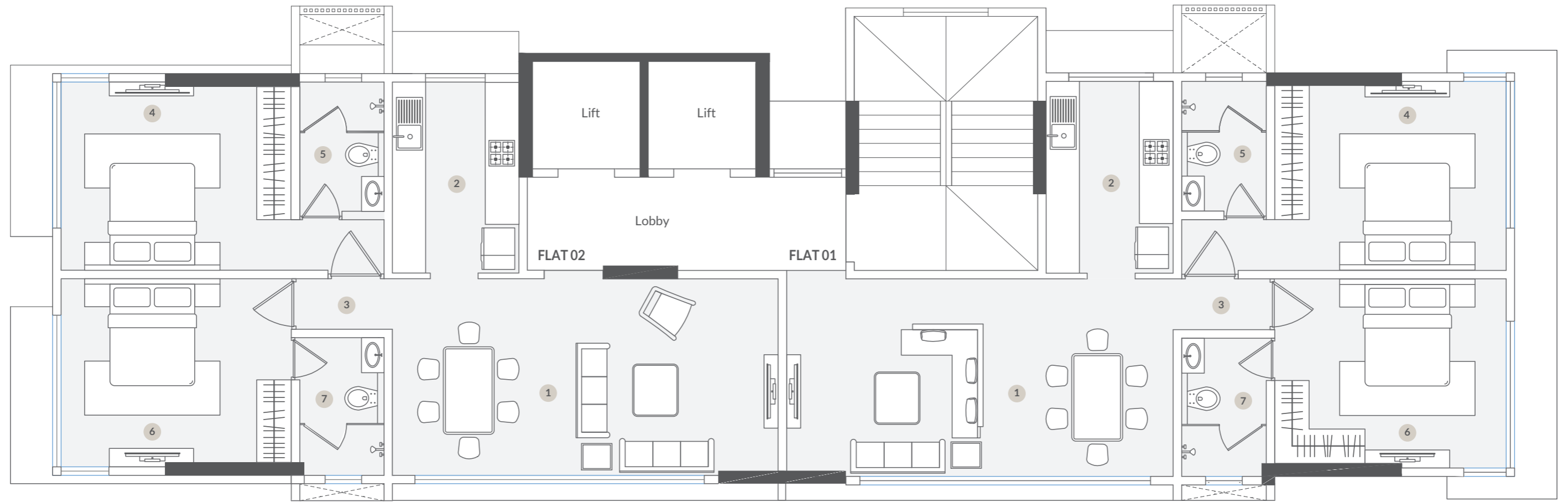
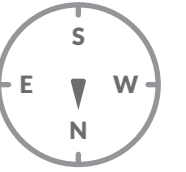
- 🍴 Restaurants
- 🛍 Shopping
- 🎓 Schools
- 🏥 Hospitals

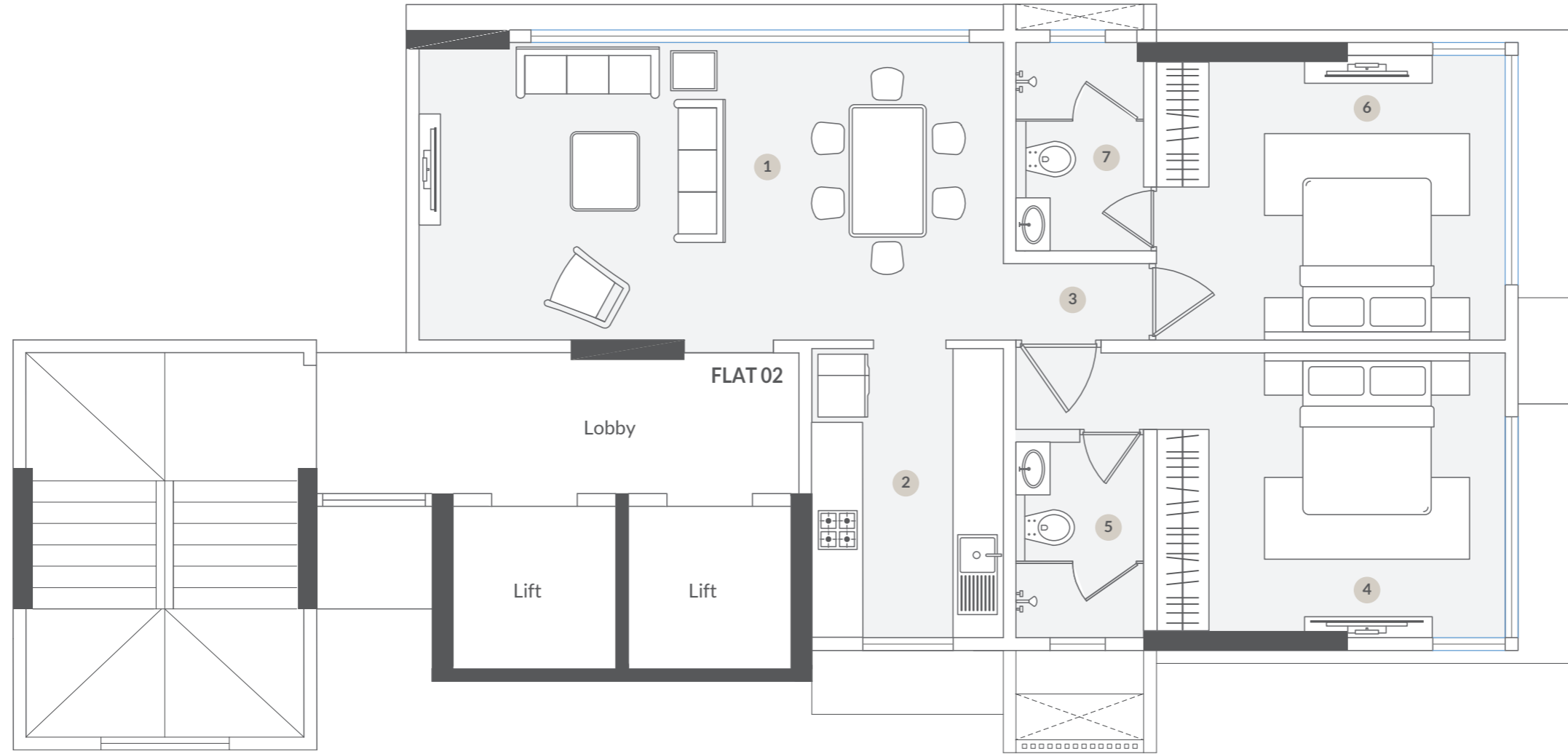
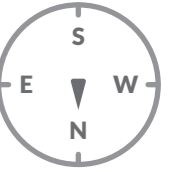




FLAT NO. 1 | 2 BHK | 3rd to 11th Floor

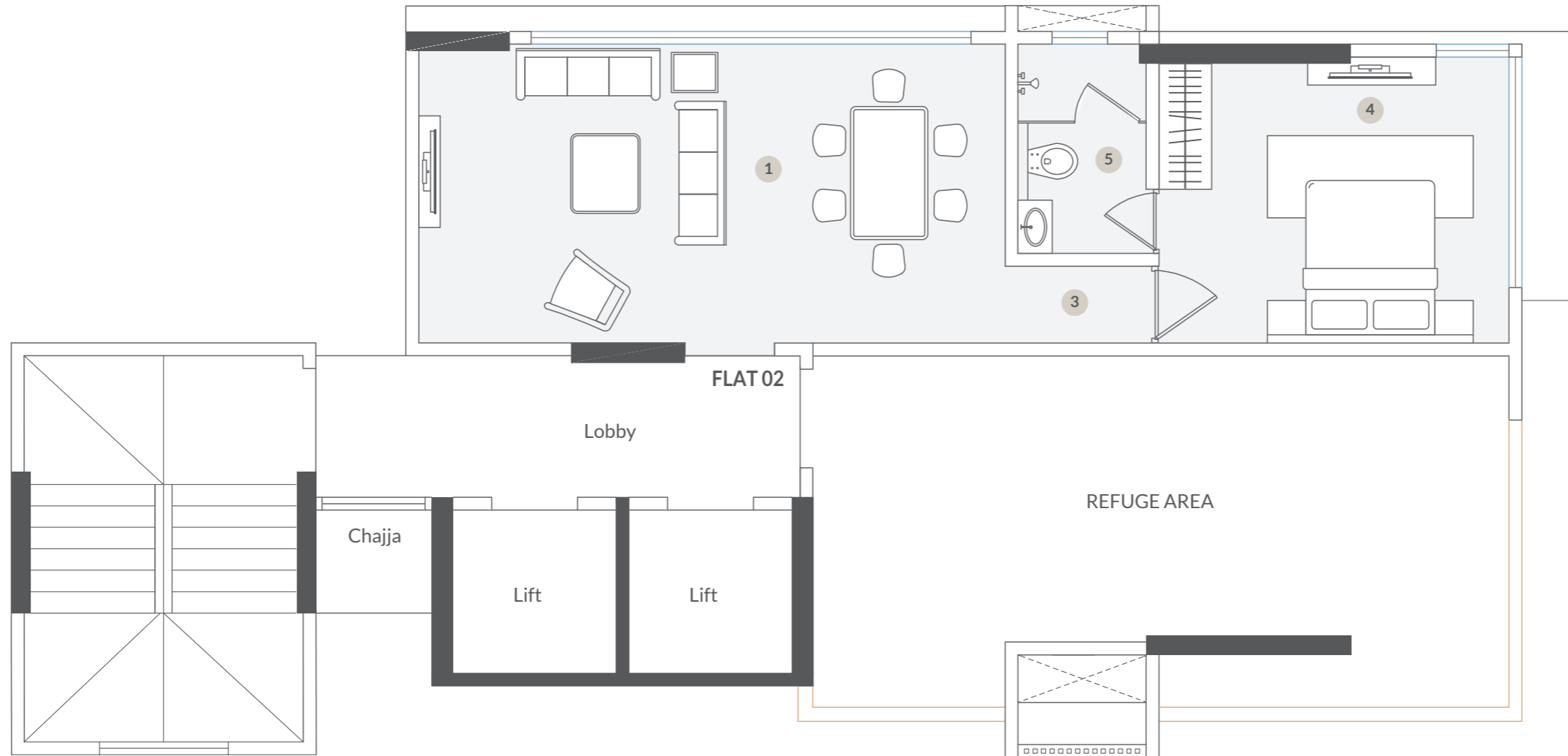
Sr. No.	Description	Area in Sq. Mt.	Sizes	Area in Sq. Mt.
1	Living & Dining	24.13	22'6" x 11'6"	259.74
2	Kitchen	7.80	7'5" x 11'2"	83.96
3	Passage	1.54	5'5" x 2'11"	16.58
4	Master Bed	15.37	13'5" x 2'11"	165.44
			5'5" x 2'11"	
5	Master Toilet	3.56	5'3" x 7'7"	38.32
6	Bed - 1	13.80	13'5" x 11'0"	148.54
7	Toilet - 1	3.78	5'1" x 8'2"	40.69
	Internal Walls	2.67	-	28.74
TOTAL		72.65	-	782.00
			RERA AREA	782.00





FLAT NO. 2 | 2 BHK | 3rd - 6th and 8th - 11th Floor

Sr. No.	Description	Area in Sq. Mt.	Sizes	Area in Sq. Mt.
1	Living & Dining	24.13	22'6" x 11'6"	259.74
2	Kitchen	7.80	7'5" x 11'2"	83.96
3	Passage	1.54	5'5" x 2'11"	16.58
4	Master Bed	15.37	13'5" x 2'11"	165.44
			5'5" x 2'11"	
5	Master Toilet	3.56	5'3" x 7'7"	38.32
6	Bed - 1	13.80	13'5" x 11'0"	148.54
7	Toilet - 1	3.78	5'1" x 8'2"	40.69
	Internal Walls	2.67	-	28.74
TOTAL		72.65	-	782.00
			RERA AREA	782.00



FLAT NO. 2 | 1 BHK

Sr. No.	Description	Area in Sq. Mt.	Sizes	Area in Sq. Mt.
1	Living & Dining	15.99	14'11" x 11'6"	172.12
2	Kitchen	5.59	7'1" x 11'6"	60.17
3	Passage	3.55	5'5" x 2'11"	38.21
4	Bed - 1	13.69	13'5" x 11'0"	147.36
5	Common Toilet	3.76	5'1" x 8'2"	40.47
	Internal Walls	1.55	-	16.68
TOTAL		44.130	-	475.02
RERA AREA				475.02



Z16
BANDRA WEST

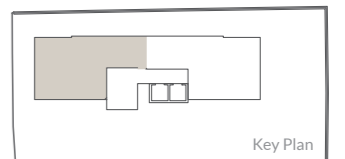
Corporate Office
Rahejas, 61, S.V. Road
Khar (W), Mumbai 400 052

Contact Us
www.sraheja.com | sales@sraheja.com
+91 22 2604 5107 / 5966 | +91 97730 41000

RERA No. P51800023799

Note : The information above is indicative and subjective all regulation. Developer reserves the right to make changes or improvements without prior notice or obligation

12.20 MW-16TH ROAD





“Our mission is to mobilize and deliver our vast knowledge, resources and talent throughout India and the world and develop – Pure Living”

ABOUT US

S. Raheja Realty has been an integral part of India’s real estate landscape over the last six decades. With three generations into the business, our group has truly perfected its craft and developed numerous landmark projects.

Ethics, Experience and Expertise are the pillars that sustain S. Raheja Realty Pvt. Ltd.

Today, S. Raheja paves the way forward with a vision to incorporate evolved architectural practices and develop projects that are both sustainable and secure. Civil engineers and architects at the management level coupled and an integrated team of experts; enable the group to deliver on its commitment to quality and efficiency.

The Group is constantly adapting with the modern times while maintaining its values of excellence and purity set forth by the co-founder of the Raheja Brothers, late Girdaridas Raheja. It is his legacy, forged with conviction that makes the group uphold its tradition of excellence and purity!

For Sales Enquiry
sales@sraheja.com
+91 97730 41000 | 98201 32281



RERA Registration No. P51800023799

Disclaimer: Images shown are tentative and for representation purposes only. All specifications, designs, layouts facilities, amenities, dimensions, plans etc, are subject to change with notice. The layout development is in phase subject to change and amendments from time to time. Development plans are subject to approval of the authorities. This advertisement constitute or form part of an offer and or contract.

ARCHITECT
M/s YMS Consultant
(Architects & Engineers)

R.C.C. CONSULTANT
M/s JW Consultants LLP

ADVOCATE/s
Percept Legal (Advocates & Notary)
& Vikrant Zunjarrao & Co.